

Supplementary Information:
**Emergence of High-Temperature Superconducting Phase in
Pressurized La₃Ni₂O₇ Crystals**

Jun Hou (侯钧)^{1,2#}, Peng-Tao Yang (杨芃焘)^{1,2#}, Zi-Yi Liu (刘子儀)^{1,2#}, Jing-Yuan Li (李婧嫻)^{3#}, Peng-Fei Shan (单鹏飞)^{1,2}, Liang Ma (马良)^{1,4,5}, Gang Wang (王罡)^{1,2}, Ning-Ning Wang (王宁宁)^{1,2}, Hai-Zhong Guo (郭海中)^{4,5}, Jian-Ping Sun (孙建平)^{1,2}, Yoshiya Uwatoko⁶, Meng Wang (王猛)^{3*}, Guang-Ming Zhang (张广铭)^{7*}, Bo-Sen Wang (王铂森)^{1,2*}, and Jin-Guang Cheng (程金光)^{1,2*}

¹*Beijing National Laboratory for Condensed Matter Physics and Institute of Physics, Chinese Academy of Sciences, Beijing 100190, China*

²*School of Physical Sciences, University of Chinese Academy of Sciences, Beijing 100190, China*

³*Center for Neutron Science and Technology, Guangdong Provincial Key Laboratory of Magnetoelectric Physics and Devices, School of Physics, Sun Yat-Sen University, Guangzhou, Guangdong 510275, China*

⁴*Key Laboratory of Materials Physics, Ministry of Education, School of Physics and Microelectronics, Zhengzhou University, Zhengzhou 450052, China*

⁵*Institute of Quantum Materials and Physics, Henan Academy of Sciences, Zhengzhou 450046, China*

⁶*Institute for Solid State Physics, University of Tokyo, Kashiwa, Chiba 277-8581, Japan*

⁷*State Key Laboratory for Low dimensional Quantum Physics, Department of Physics, Tsinghua University, Beijing 100084, China*

*E-mails: jgcheng@iphy.ac.cn; bswang@iphy.ac.cn;
wangmeng5@mail.sysu.edu.cn; gmzhang@mail.tsinghua.edu.cn

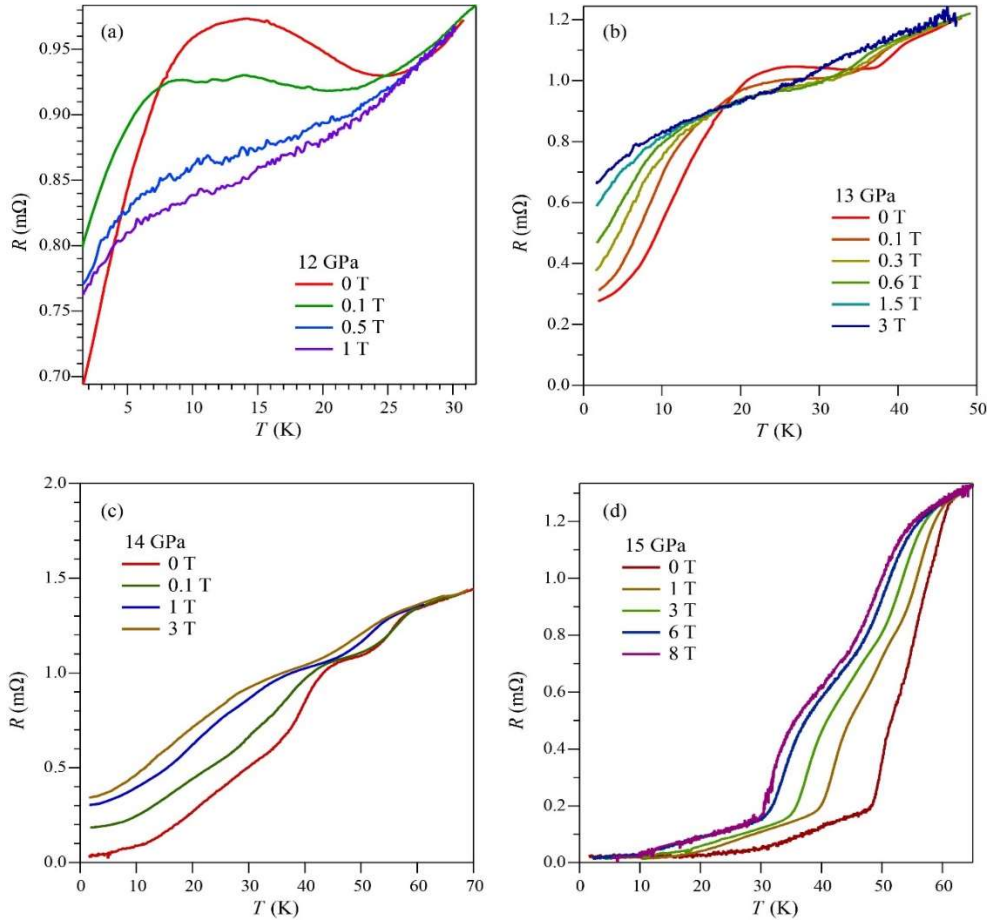


Figure S1 The low-temperature resistance of $\text{La}_3\text{Ni}_2\text{O}_7$ (sample 2) under different magnetic fields at: (a) 12 GPa; (b) 13 GPa; (c) 14 GPa; (d) 15 GPa measured in CAC.

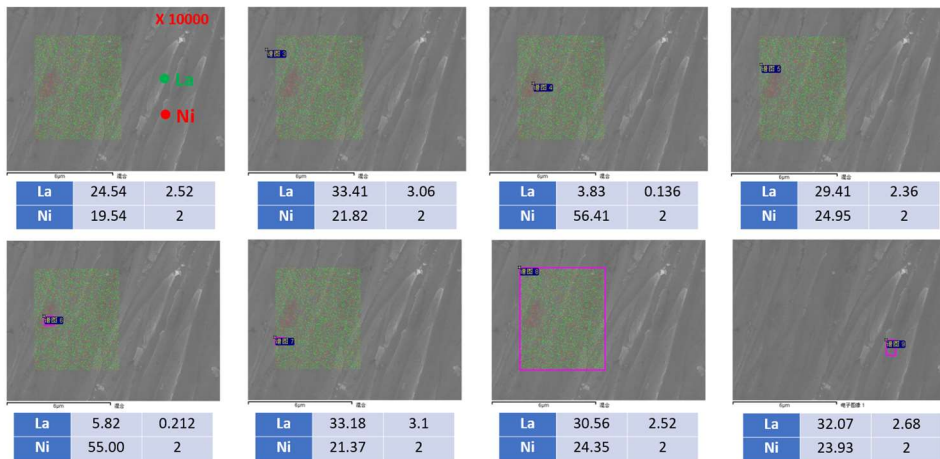
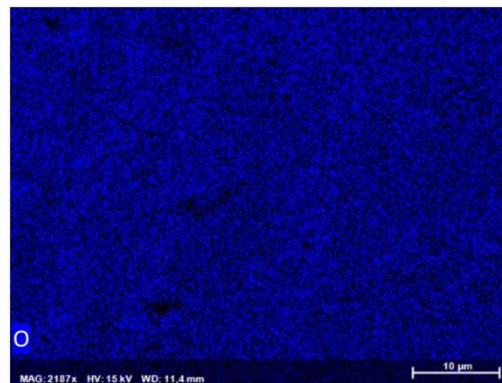
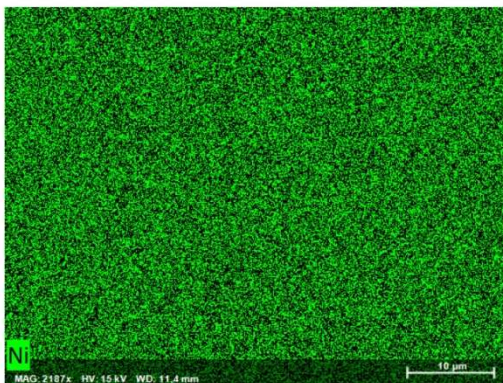
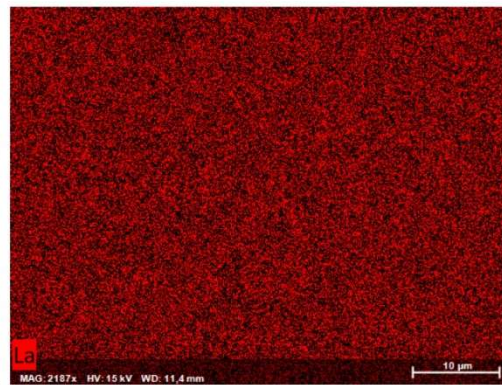
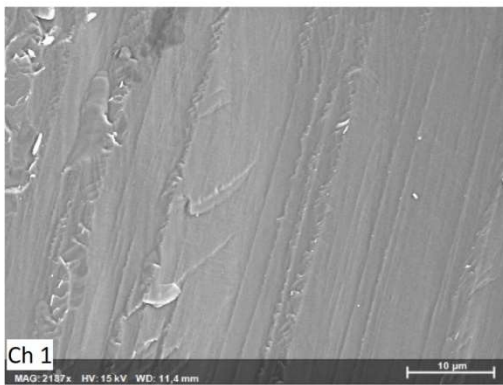
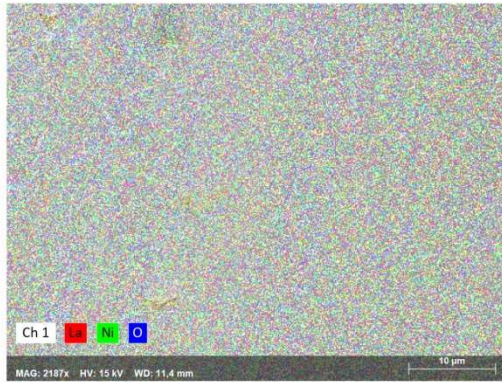
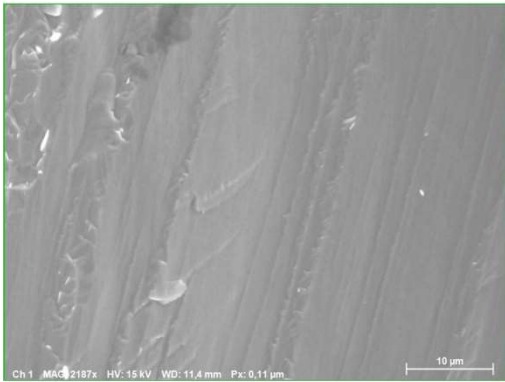
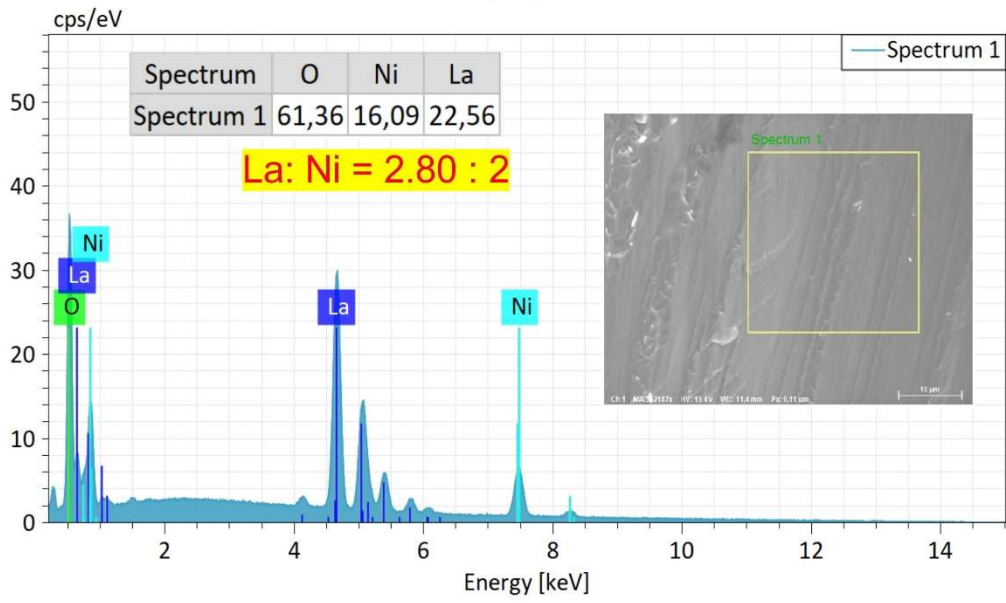
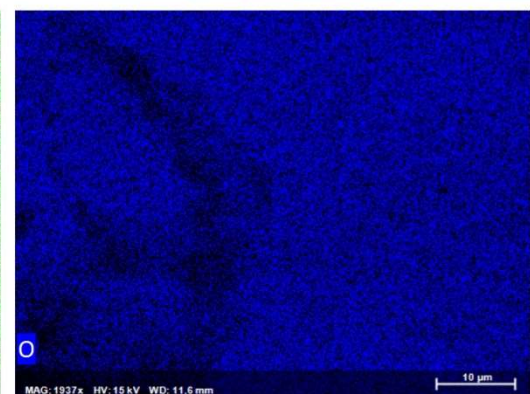
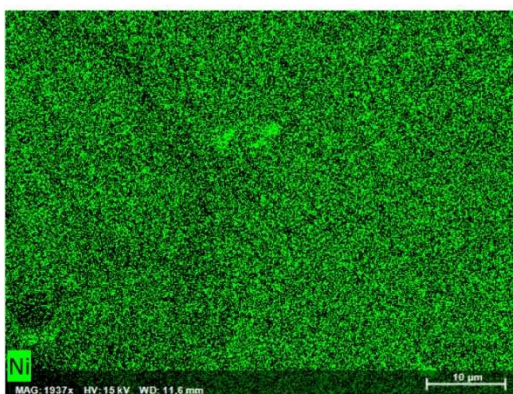
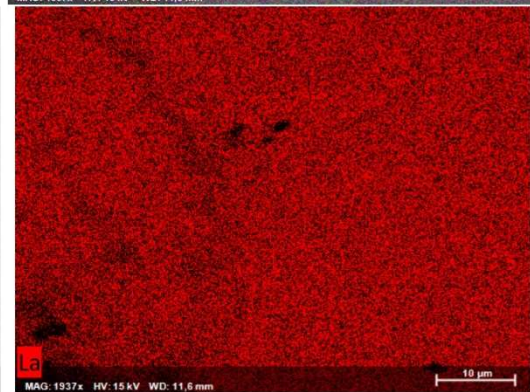
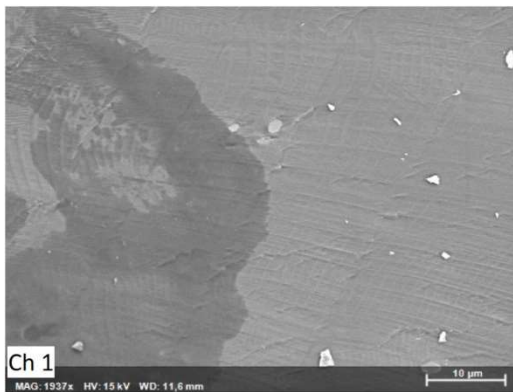
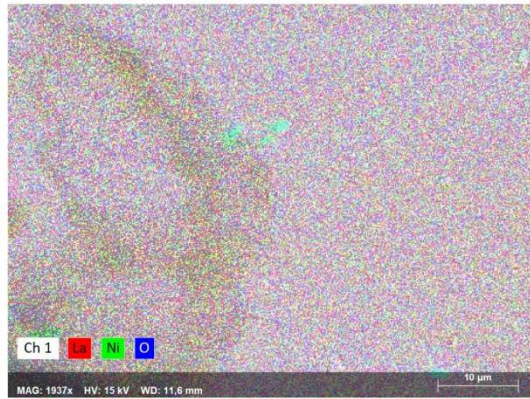
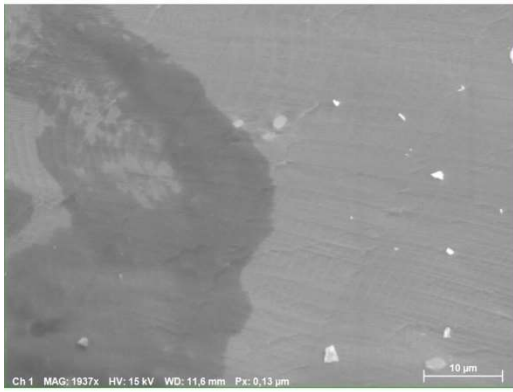
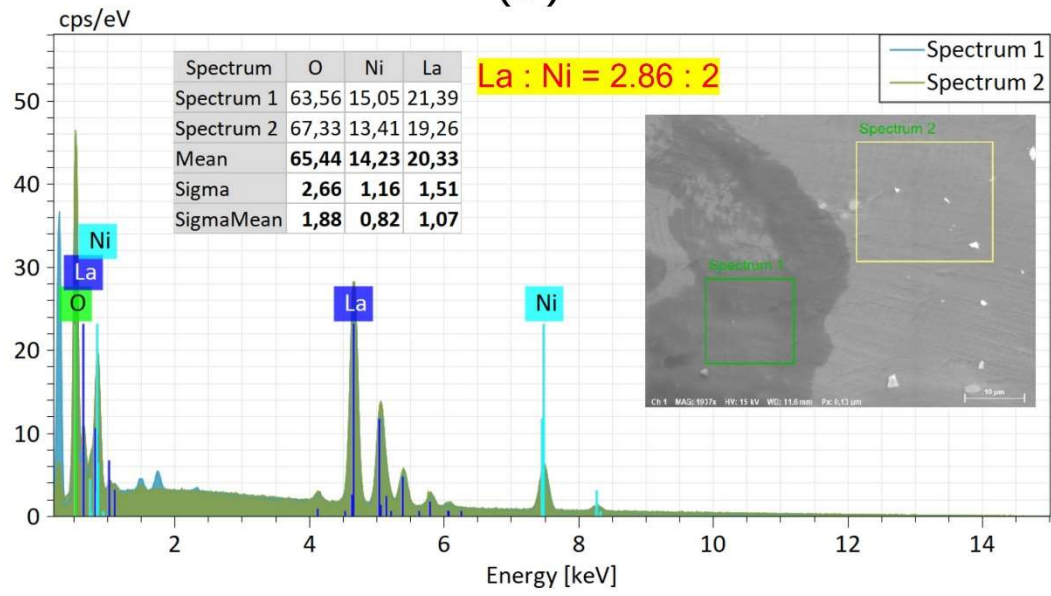


Figure S2 The SEM-EDX results on the sample 2 after decompression.

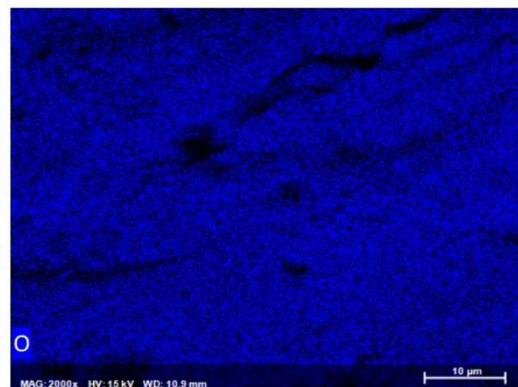
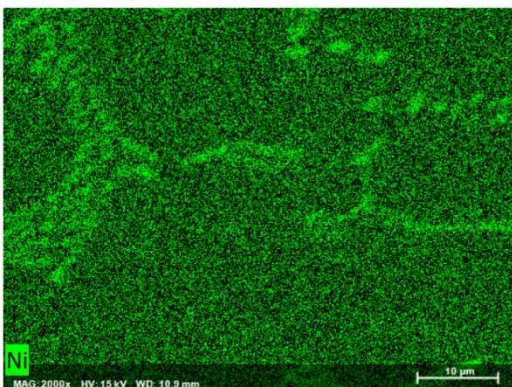
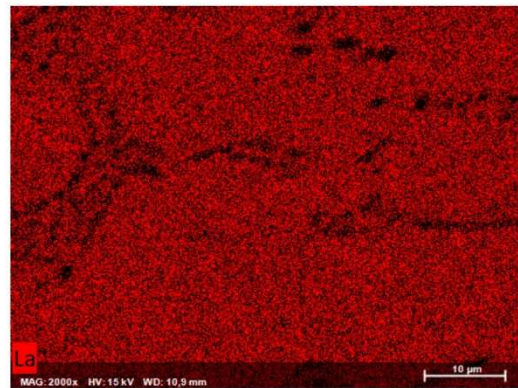
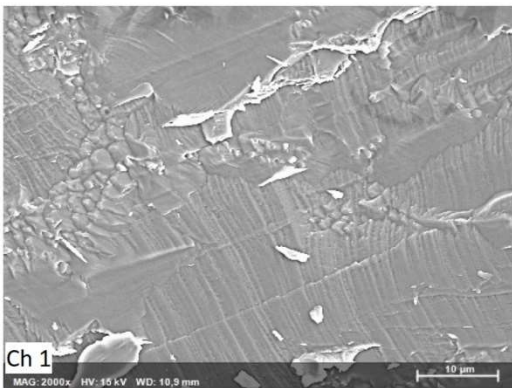
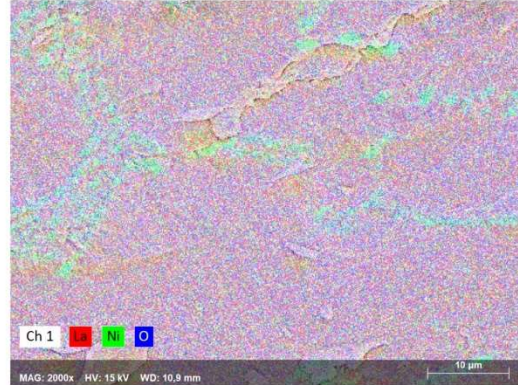
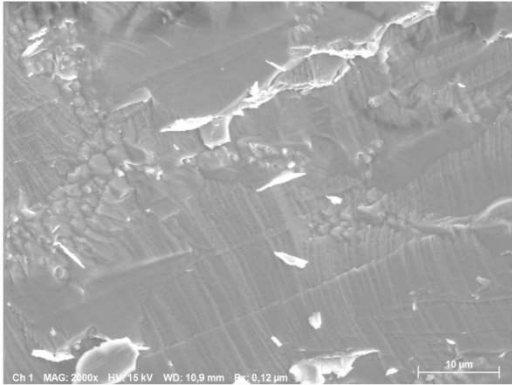
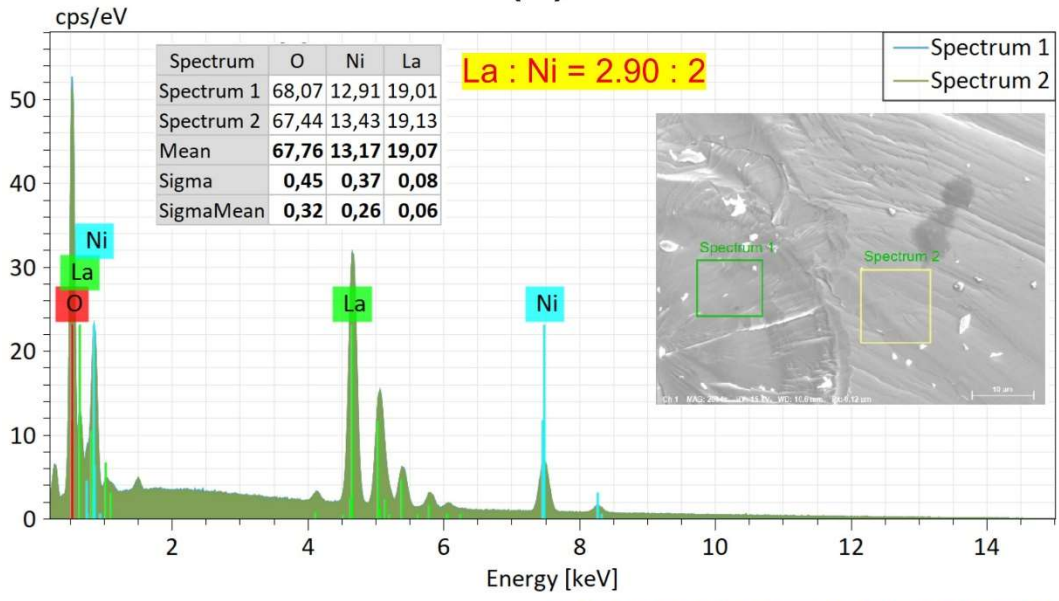
(a)



(b)



(c)



(d)

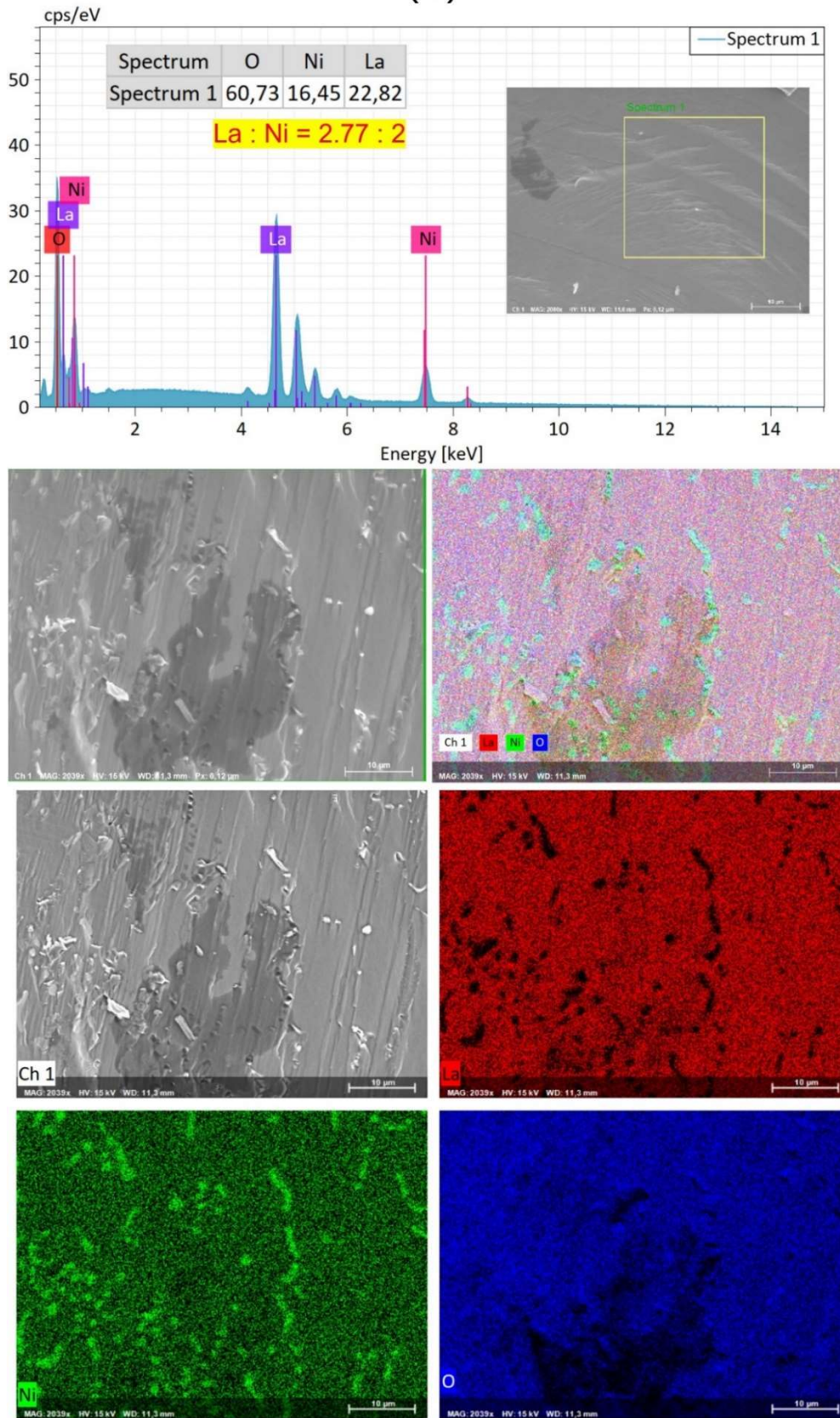


Figure S3(a-d) The SEM-EDX results on the samples from the same batch as the sample 3.