

Supplementary Materials

Quasi-two-dimensional diffusion in adherent cells revealed by three-dimensional single quantum dot tracking

Chao Jiang(江超)^{1,2}, Bo Li(李波)¹, Shuo-Xing Dou(窦硕星)^{1,2}, Peng-Ye Wang(王鹏业)^{1,2,3**},
Hui Li(李辉)^{1,4**}

¹*Beijing National Laboratory for Condensed Matter Physics and Laboratory of Soft Matter Physics, Institute of Physics, Chinese Academy of Sciences, Beijing 100190, China*

²*School of Physical Sciences, University of Chinese Academy of Sciences, Beijing 100049, China*

³*Songshan Lake Materials Laboratory, Dongguan, Guangdong 523808, China*

⁴*School of Systems Science, Beijing Normal University, Beijing 100875, China*

**Corresponding author. Email: huili@bnu.edu.cn; pywang@iphy.ac.cn

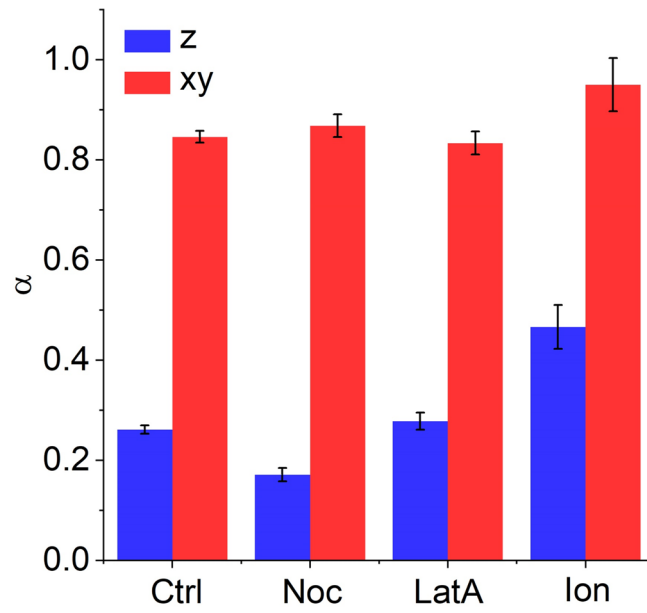


Fig. S1. The averaged exponents α_{zy} and α_z of trajectories in control cells (Ctrl) and in cells treated with nocodazole (Noc), latrunculin A (LatA), or ionomycin (Ion). Error bars indicate the SEM.

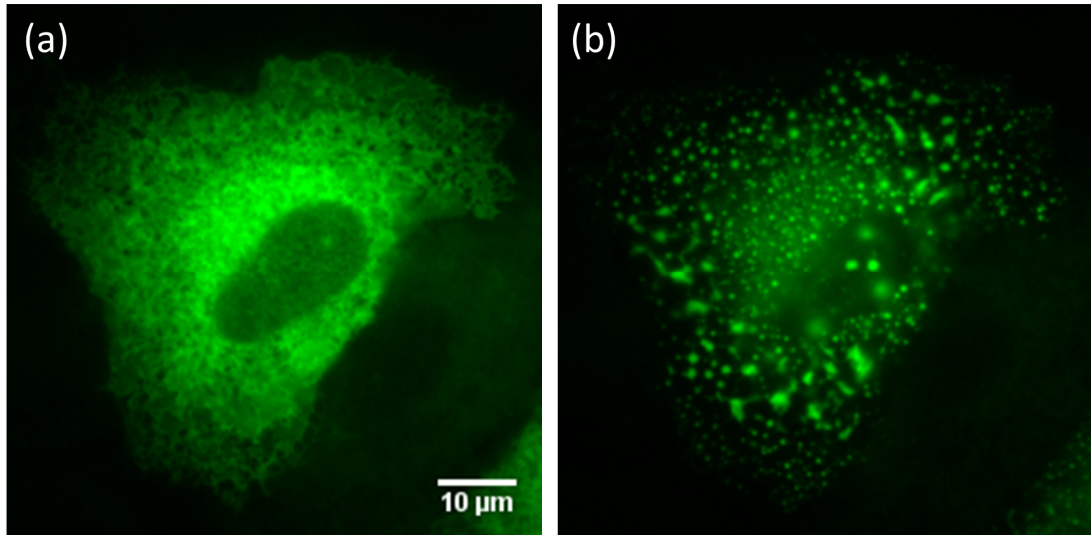


Fig. S2. Fluorescent image of ER in a cell before (a) and after treatment with ionomycin (b). Scale bar, 10 μm .

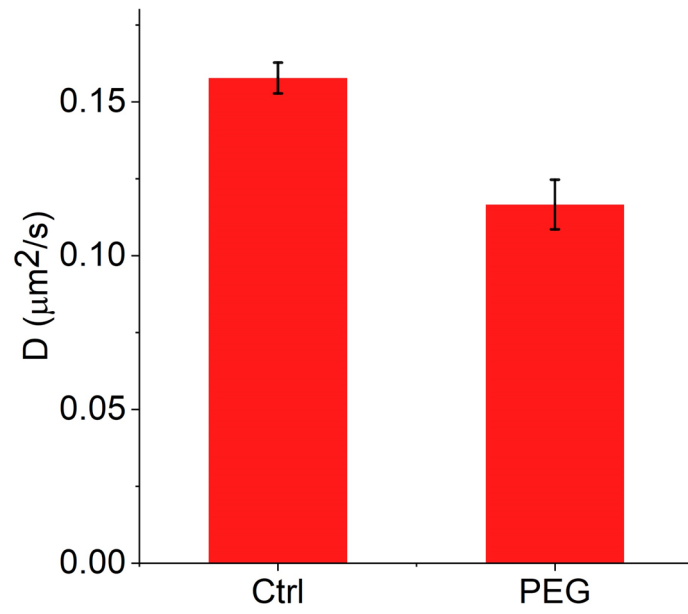


Fig. S3. The lateral diffusion rate is decreased by compressing the cells via PEG (232 trajectories in 5 cells). Error bars indicate the SEM.

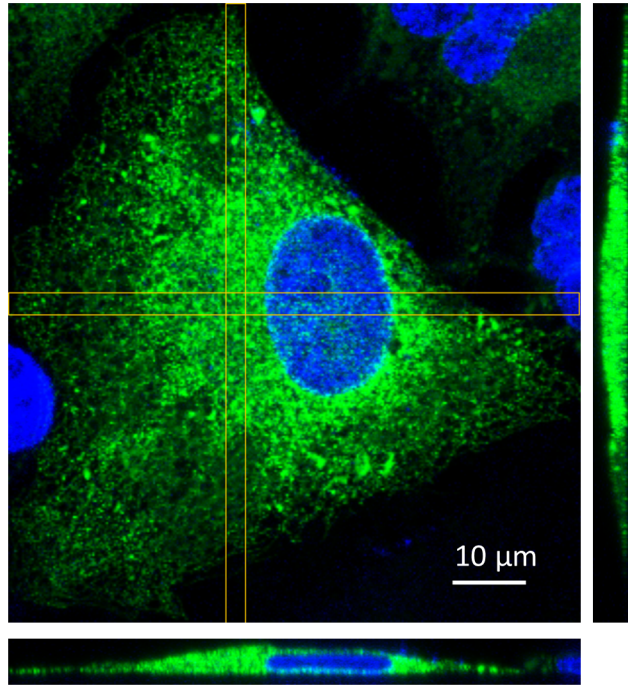


Fig. S4. Confocal image of an 549 cell transfected with GFP-ER (green). The nucleus is labeled by Hoechst 33342 (blue). Views of cross sections parallel to the x - y (central panel), y - z (right panel, maximum projection) and x - z (lower panel, maximum projection) planes and along the yellow boxes are shown. Scale bar, 10 μm .